

A large, oval-shaped, stainless steel swimming pool is shown floating on the surface of a calm lake. A person is swimming inside the pool. The pool's interior is a vibrant blue, while its exterior shows a metallic, ribbed texture. The surrounding environment includes a clear blue sky with some clouds, distant mountains, and a rocky shoreline in the foreground with several large stones.

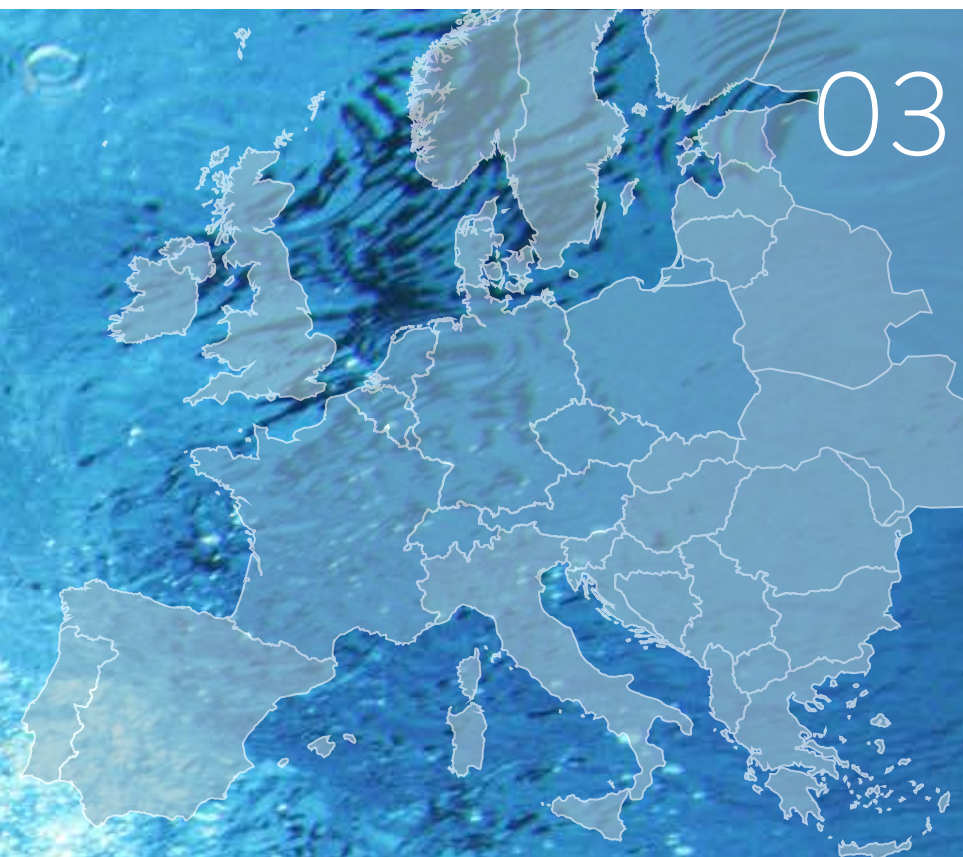
hsb
recreating pools

feel the future!

Stainless steel swimming pools for future generations

02

03

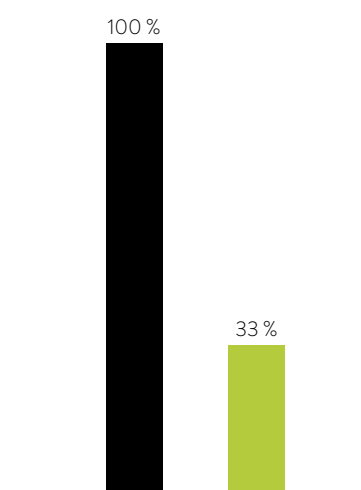


Europe's pool builder

Close to customers across Europe

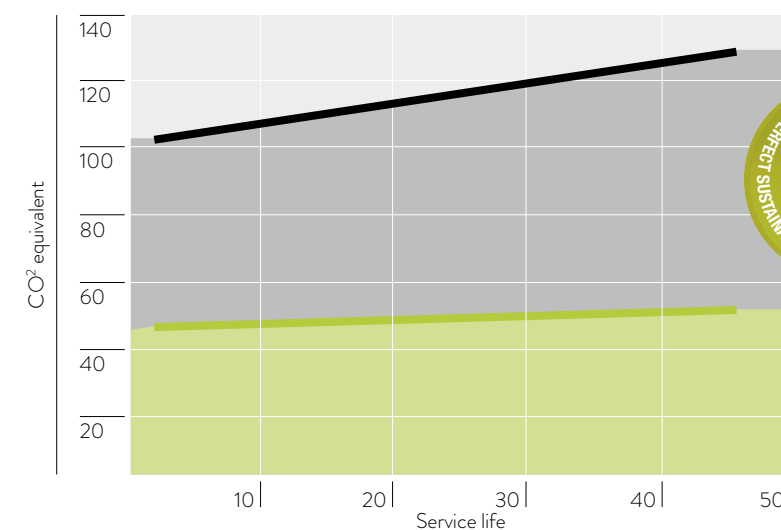
With our Europe-wide sales network we offer you exemplary customer proximity. You benefit from our since 1969 gained experience. In this time we have continually developed our invention - the stainless steel pool - significantly.

POTENTIAL ENVIRONMENT IMPACT



A shrink-free steel concrete pool for reinforcement consumes three times as much steel as for the entire stainless steel pool, just for the reinforcement.

● Concrete / tiles ● Stainless steel



The entire "CO₂ footprint" – from manufacture through to disposal – is considerably lower and constant with stainless steel pools.

Stainless steel

Sustainability in comparison

Stainless steel is the material with the best environmental compatibility.

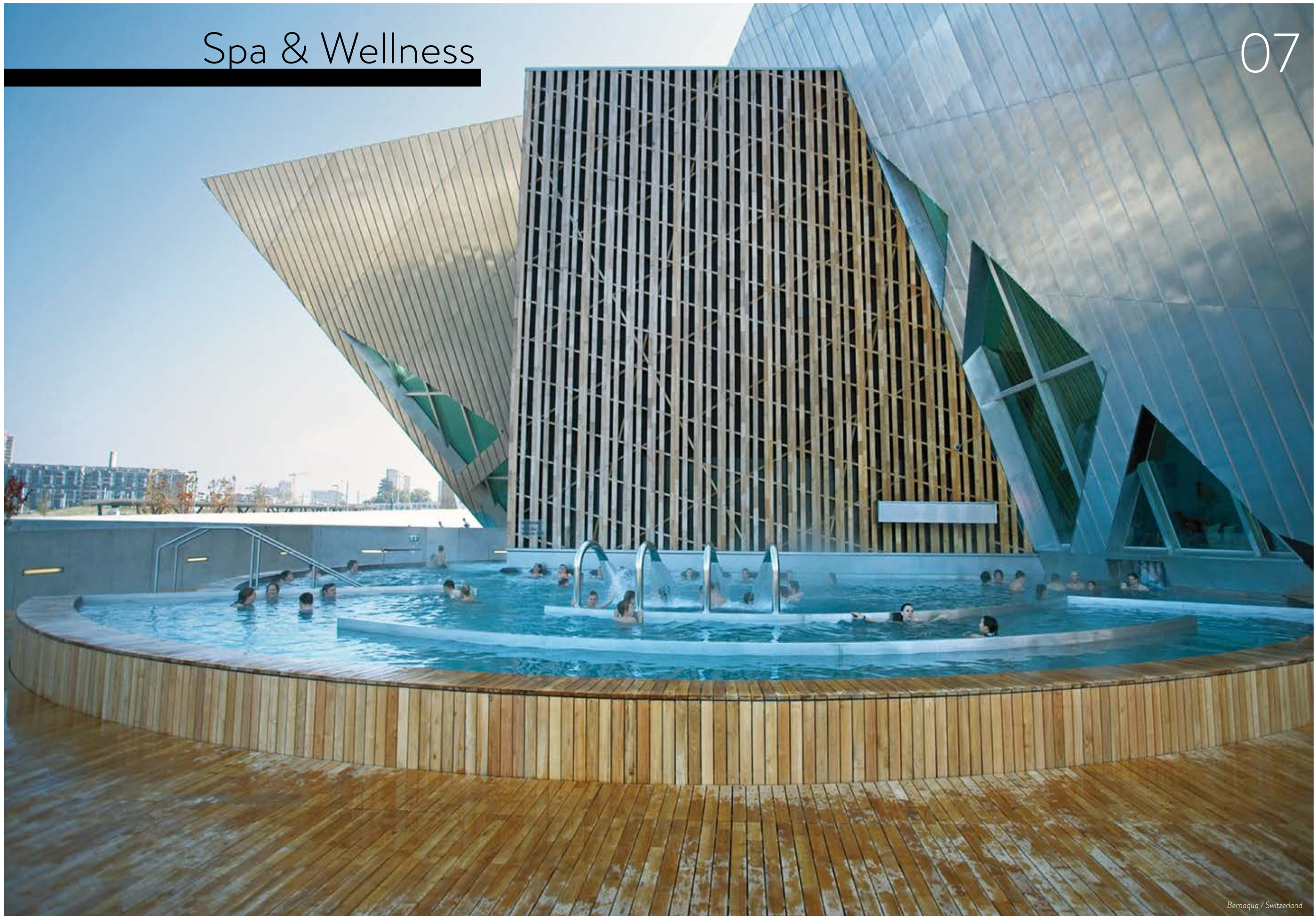
Stainless steel remains stable for many decades and does not leak any substances (such as chemical softeners from foil or PVC coatings) into water or the ground.

The CO₂ balance of a stainless steel pool is considerably better than any other construction materials for pools.

In comparison to concrete, the resource balance of the manufacturing process is considerably more cost-effective.

At the end of the service life of a steel/concrete pool of 25 x 12.5 x 1.4-1.8 m, for example, high disposal costs are incurred for around 300 tonnes of construction waste. For a stainless steel pool of the same size, around 12 tonnes of valuable raw materials are made available for steel generation.

This is sustainability!



Wellness from star architect Daniel Libeskind.
 Bernaqua offers the widest range of products. Pool guests hungry for new experiences have fun in the water slide park with Magic Eye, Emotion Ride, Black Hole or in the Wild Water Canyon and a variety of underwater attractions and two flow channels.

Wellness-oriented pool guests enjoy whirlbeds in the freshwater and saltwater pools and find peace and relaxation in the Roman/Irish bath or the 'So-laqua' meditation pool. A generous parent/child area completes the range.

St. Johann im Pongau / Austria



Bernaqua / Switzerland



Whirlbeds



Bernaqua / Switzerland



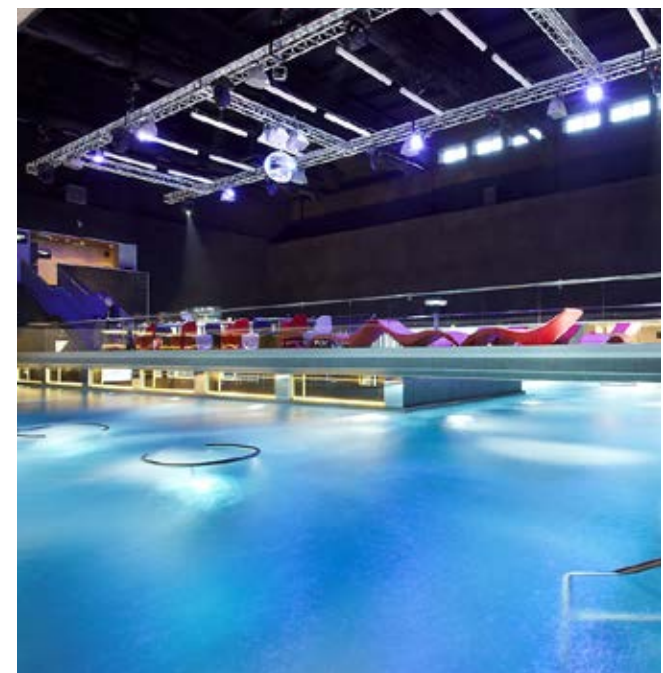
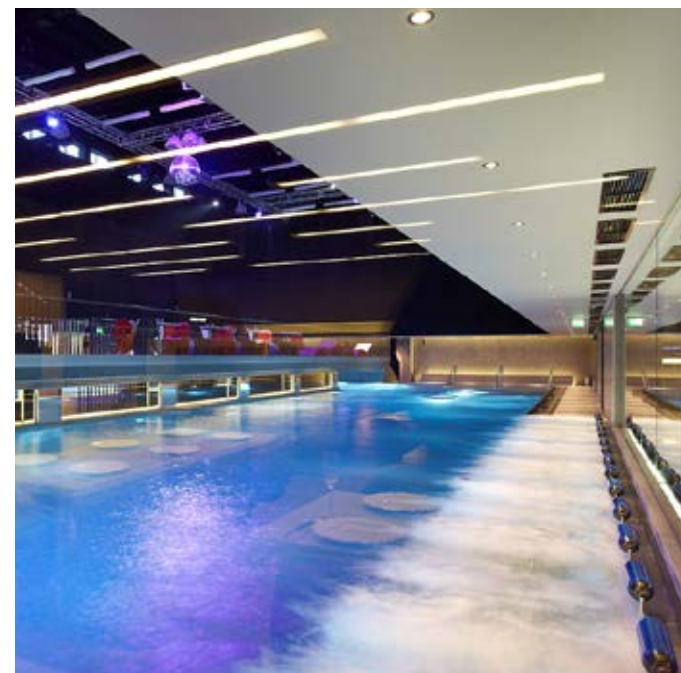
Bad Kleinkirchheim / Austria



Spa & Wellness

Voda Club / St. Petersburg / Russia
 Builder: FTF Holding St. Petersburg
 Architect: SRV Toimitilat

On an area of around 560m² of water, pool guests can access two whirlpools at 38° C, lots of whirlbeds, an underwater grotto, multiple geysers as well as wall and floor massage nozzles.



12

13

Sport & Fitness





Zwickau / Germany



Zwickau / Germany



Chartres / France



Dumbéa / New Caledonia / © Coste



Dumbéa air intake



Zwickau / Germany

The installations for sport swimming are carefully regulated by the FINA. Only minimal variations in dimensions are permitted and are measured down to the millimetre. Stainless steel pools are metal constructions designed and built with millimetre precision. For competition pools, wave backflow from the

wall that slow the swimmer down should be reduced as far as possible to prevented entirely. The special configuration of our stainless steel pool walls prevents this wave backflow, facilitating the fastest swim times.



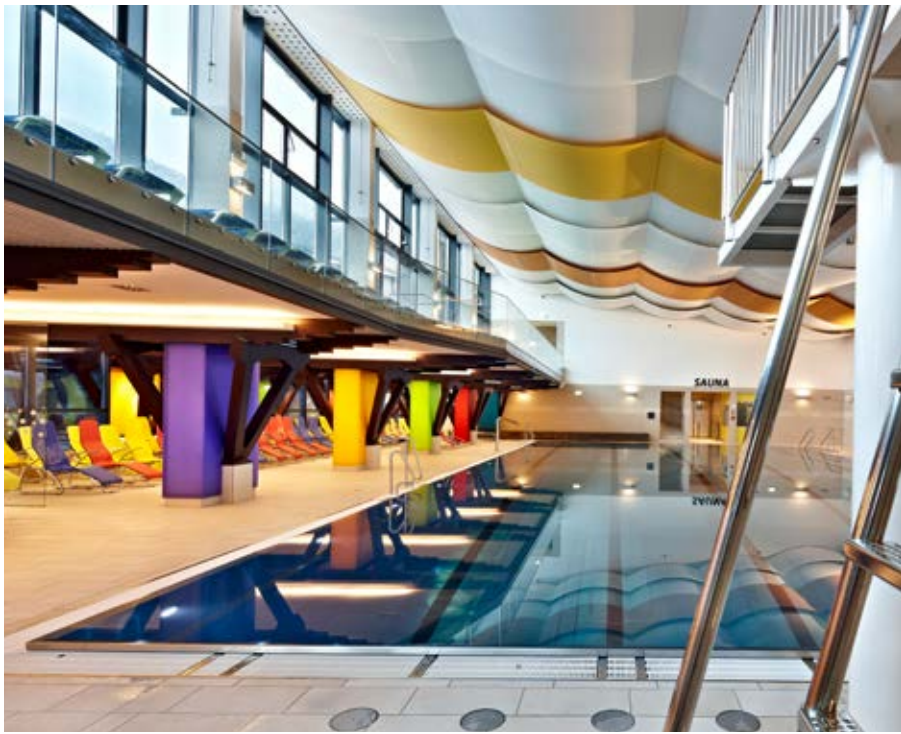
Holmes Place



Holmes Place



Holmes Place



Zell am See / Austria

hsb pools are total solutions. All equipment and installations required for sport and specific applications are integrated into the stainless steel pool. These can include: starting blocks, touch panels, false start and back turning indicator, lane rope

holders, movable start bridges, lifting or folding walls, moveable floors, field of play markings for water polo and demarcation anchorage including gates. For all these requirements there are proven solutions tried and tested in practice.

Experience & Fun



Chartres / France



Neuwied / Germany



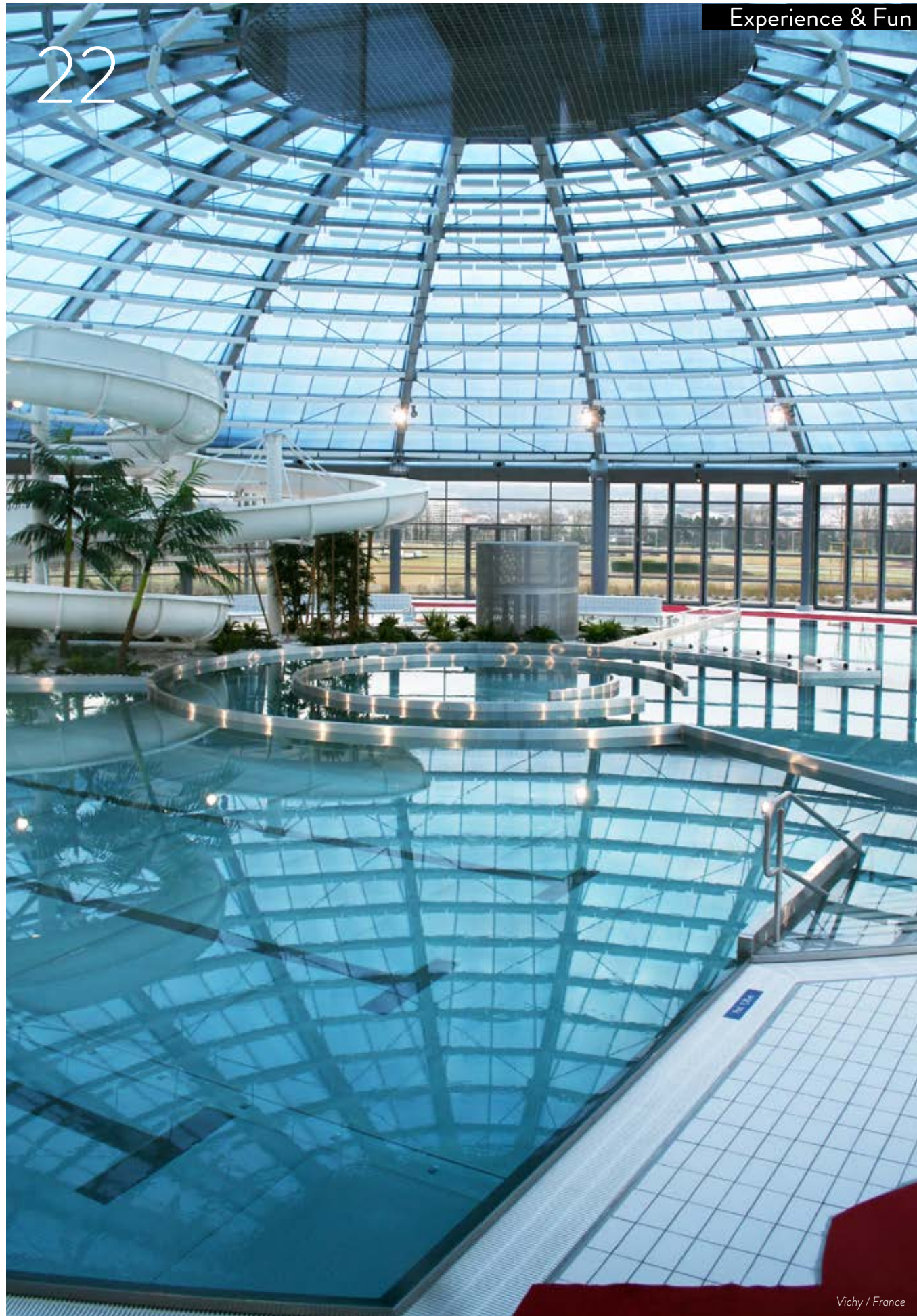
Erlangen / Germany



Saimaan / Finland

The swimming pool of the 21st century integrates worlds of fun and experiences. The pool installations required for this, such as flow and wildwater channels, landing sofas for water slides or crazy rivers, installations for

wave ball or wave machines for surging billows, are tried and tested constructions in our stainless steel pools that fulfil safety requirements.



Vichy / France

The architectonic demand for an experience or fun area in the swimming pool is high. The stainless steel material with its pore-free,

shiny surface and the wide variety of design options meet every need.

Spa area and Kneipp pool



In the wave pool



Waterfall, Chartres / France



Slide with landing pool, Vichy / France



Therapy

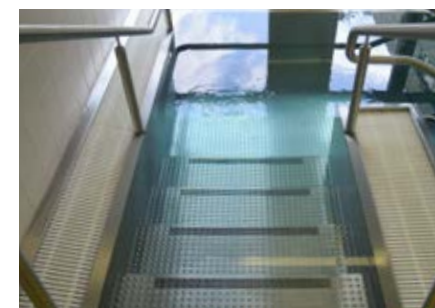
Movement pool



Vitznau / Switzerland



Vöcklabruck / Austria



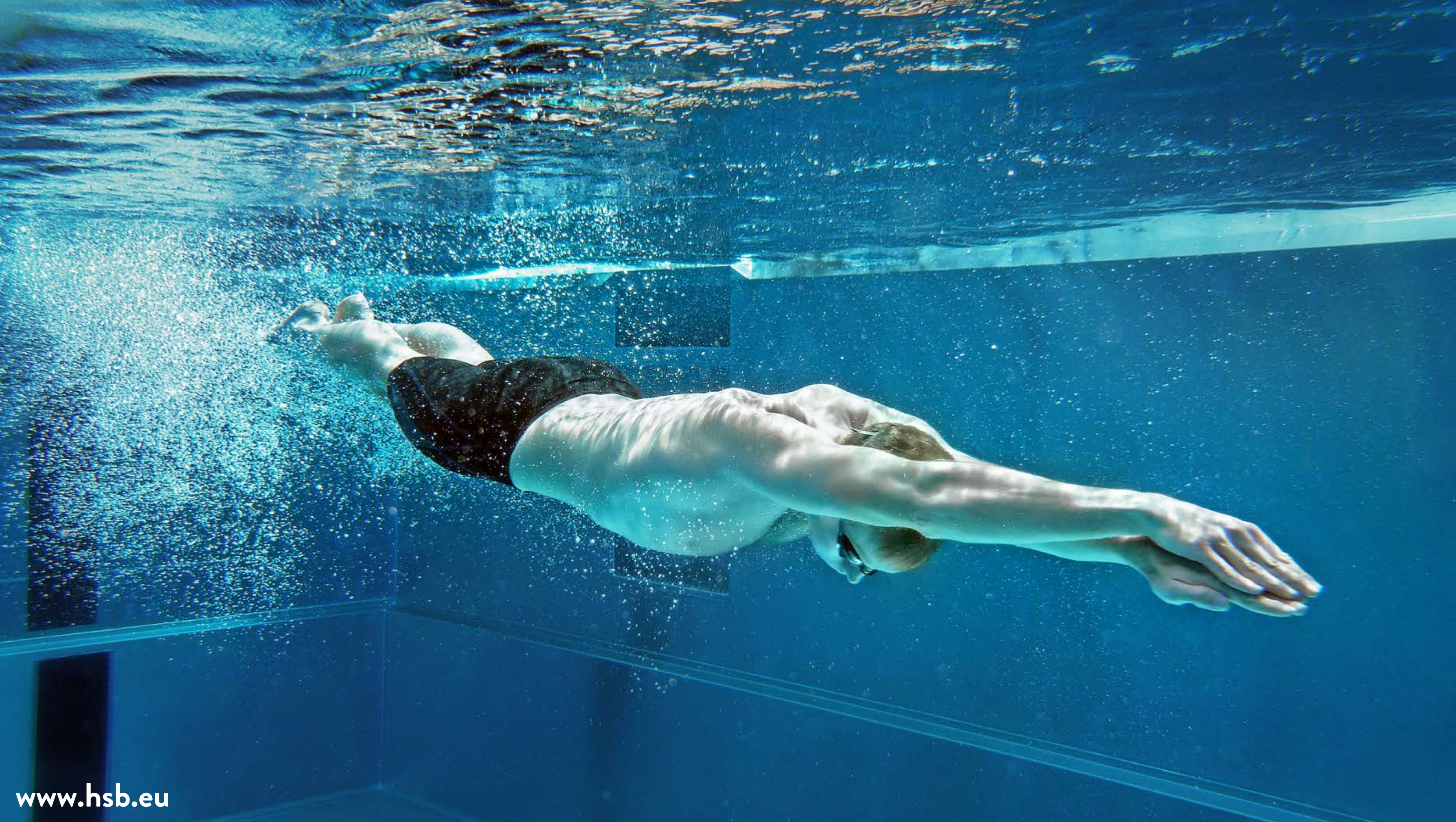
Vöcklabruck / Austria



Linz / Austria

Movement and massage pools are essential in the rehabilitation sector. The high water temperatures and need for hygiene require a pore-free pool construction ma-

terial. Stainless steel is the optimum material for this application. The varied design solutions met every need for therapists.





hsb group

hsb austria gmbh

Dr.-Scheiber-Straße 28
A- 4870 Vöcklamarkt

T +43 (0)7682 2831-0
F +43 (0)7682 2831-16
office@hsb.eu
www.hsb.eu

hsb germany gmbh

Rauchstrasse 42A
D-13587 Berlin

T +49 (0)30 355303-0
office@hsb.eu
www.hsb.eu

hsb switzerland inc

Landenbergstrasse 35
CH-6002 Luzern

T +41 (0)41 3611662
office@hsb.eu
www.hsb.eu

hsb france sas

ZI Paris Nord 2
33, rue des Chardonnerets, BP 63154
F-95978 Roissy CDG cedex

T +33 (0)141 840040
bureau@hsb.eu
www.hsb.eu

